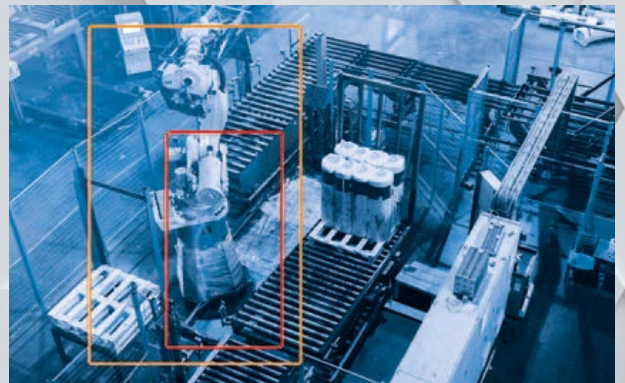


PIEPER



FireCatcher

Video Smoke and Flame Detection
for Critical Environments

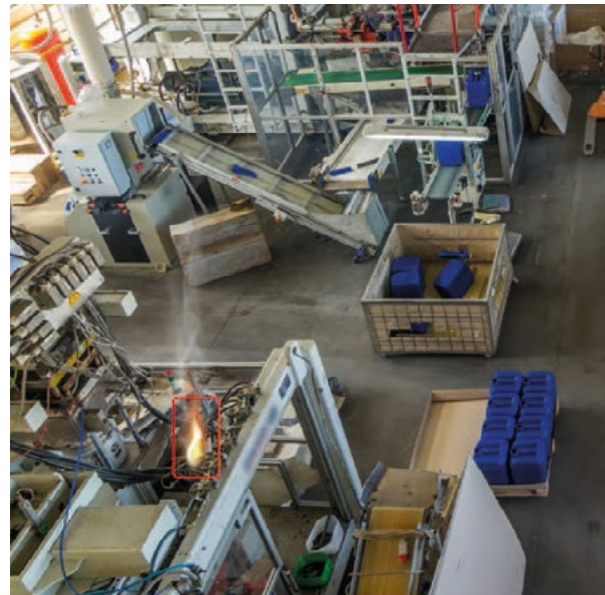
Protect your facility with a camera that warns you of smoke and flames

As a safety professional, you want to protect your business facility or infrastructure as much as possible. By adding the intelligent FireCatcher software to your Axis camera, you can enhance your fire safety by allowing to visually recognize fire outbreaks in the earliest stage. FireCatcher detects smoke or flames and integrates seamlessly with your fire alarm control panel and video surveillance system to generate an early warning. Visual verification in the camera image allows you to assess the danger and react fast. FireCatcher is your best guarantee to be ahead of the fire and prevent worse from happening.



See what's happening immediately

When alerted, you can immediately see what is going on in the camera image. This allows you to assess the situation and make better decisions. Without the need to go on site, FireCatcher allows you to see the exact location and the nature of the fire, verify the presence of people/victims, and assess the progress of the incident in real time.



Intelligent fire detection

FireCatcher software delivers excellent smoke and flame detection. The software is designed for selected Axis cameras, with the FireCatcher analytics taking place within the camera, on the edge of the network. This allows for faster detection and decision-making without needlessly burdening the network. FireCatcher is a field-proven smoke and flame detection application, and based on previously CNPP and BOSEC-certified detection solutions.

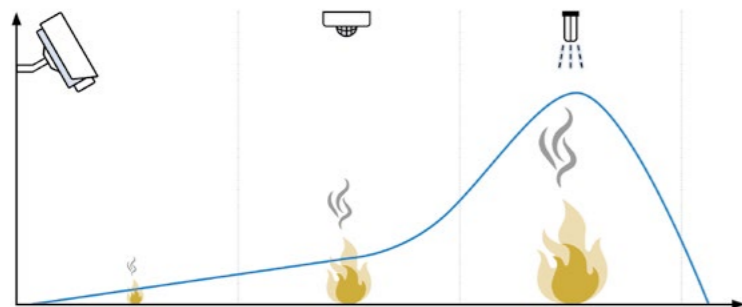
For harsh environments

The FireCatcher solution is a perfect match for industrial environments and their specific challenges. It can be installed on cameras that are fit for demanding environments and challenging light conditions. The detection is not affected by bright arc welding flashes, flashlights or other typical workplace activities.



For great heights

FireCatcher is ideal for use in tall buildings or large indoor spaces. In these environments, smoke might never reach your traditional smoke detector, because of a process called stratification, which stops the upward movement of smoke.



Early fire detection

Traditional fire detectors need to make direct contact with heat or smoke to be activated. But by the time that happens, it can already be too late. The FireCatcher software does not wait for this, but immediately sees starting fires at the source. This saves valuable time, which allows you to intervene much quicker and prevent fire damage from spreading.

Real-time health monitoring

FireCatcher has a real-time tampering detection and image quality control functionality. This enables you to receive a notification when the camera is out of order or when detection is made impossible due to obstruction of view, insufficient lighting, excessive brightness, or low contrast.



FireCatcher software

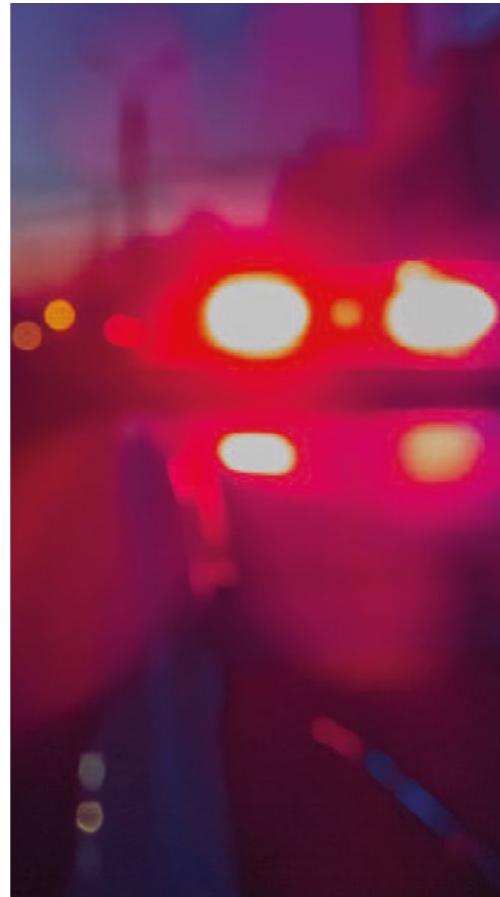
The FireCatcher analytics algorithm installs on a qualified Axis® camera in the form of an ACAP (AXIS Camera Application Platform) module and processes video in real time.

Connect with your fire alarm

FireCatcher connects with your Fire Alarm Control Panel (FACP) I/O through relay contacts, in the same way as traditional detectors. Alarms and status are available for integration with your existing fire safety system

Visualize FireCatcher alarms in your VMS

FireCatcher can connect with most Video Management Systems (VMS) over LAN and provides video with embedded metadata. You can visualize your alarms in your VMS and add annotation boxes or other information about the detected incident, such as time, location or type of incident.



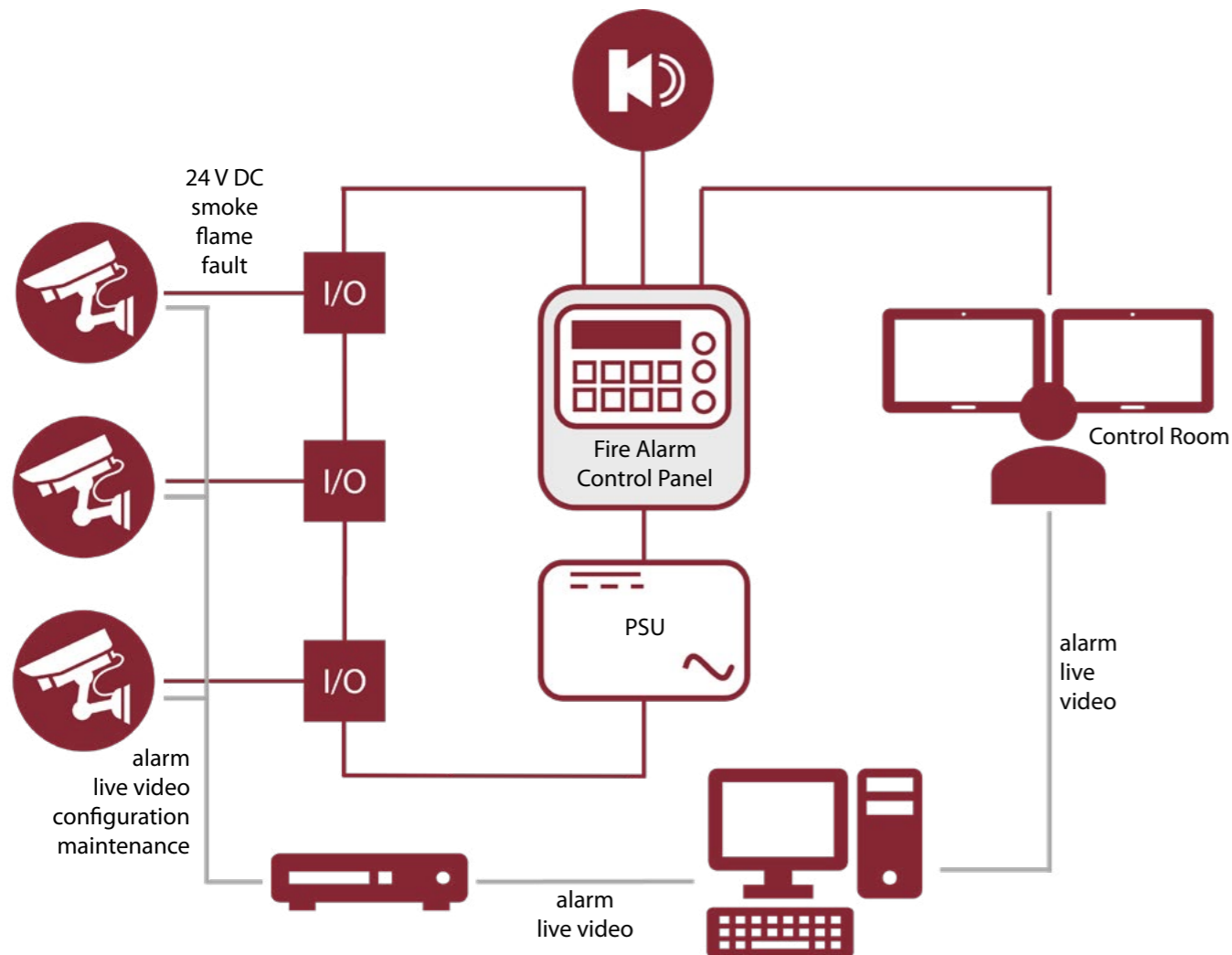
PIEPER - Experience meets expertise


Over 50 years of experience, excellent market knowledge, a highly qualified team and partnership at eye level - that's what PIEPER GmbH, headquartered in Schwerte, stands for.

Complete video surveillance solutions for industry and security-sensitive environments are our core competencies. The focus is on furnace video technology for visual process monitoring in temperature ranges up to 2,400 °C, video and management systems for mass transportation and airports as well as industrial video solutions for production control and early fire detection. We manufacture and install systems for digital image processing, communication and data technology, network technology, access control systems, building management solutions and outdoor area protection as well as all system supplementary components. Our DIN EN ISO 9001 and SCC certifications are proof of quality at the highest level.

However, our customer service begins with individual consulting and planning in the run-up to a project. Regardless of whether it is a modernization or a completely new installation on the way to a modern monitoring solution - all-round support including personal pre- and after-sales service is a matter of course for the PIEPER team. From the appropriate selection of your security system to integration, installation and commissioning to spare parts logistics, maintenance and inspection - our specialists are always there for you. Transparency, short communication channels and fixed contact persons are a matter of course.

Throughout Germany, we are there for you in Berlin, Cottbus, Düsseldorf and at our headquarters in Schwerte. Internationally, we are represented by partnerships and cooperations in Europe, Asia, Africa and North and South America.





PIEPER GmbH (Head Office)
Binnerheide 33
58239 Schwerte
T +49 2304 4701 0
F +49 2304 4701 77

Berlin
Großbeerenstr. 169
12277 Berlin
T +49 30 722 52 99
F +49 30 722 44 87

Cottbus
Calauer Str. 70
03048 Cottbus
T +49 355 430 903 40
F +49 355 430 903 41

Düsseldorf
Gumbertstr. 111
40229 Düsseldorf
T +49 211 2150 33
F +49 211 2150 36