



## FRS-LI1 Series - Full HD Fiber Optical Furnace Probe

### FUNCTIONALITY

The FRS-LI1 series are fiber furnace probes, especially developed for the usage in combustion chambers. Inclusive or exclusive camera, the probes are used in those environments where even an IR-camera cannot provide sufficient images due to the poor lightning conditions.

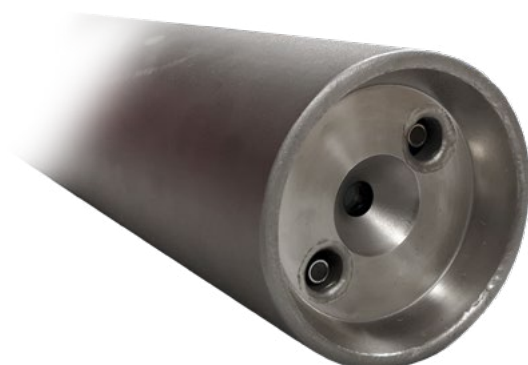
The special feature of the FRS-LI1 probe is its construction, because the LED cold light source is located in a junction box equipped with a fiber optic cable, including an electronic board for controlling the lightning.

Equipped with two plug connections for a camera and the fiber optic cable, the images are transmitted either via CAT, fiber optic or analog, depending on the system configuration of the operator.

The advantages of the fiber optic furnace probe are therefore not only the better possibility of monitoring very dark environments, for example galvanizing in the steel and cement industry or exit ends in the glass industry, but also the considerable reduced power consumption and even brighter illumination of the area to be observed.

### MAIN FEATURES

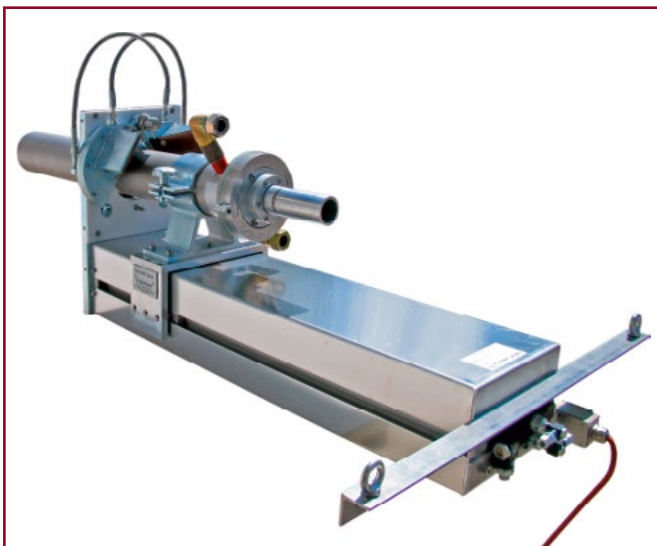
- Furnace probe with integrated and controllable fiber optic lightning
- Axial and radial version available
- Full HD (1,920 x 1,080 px) 1/2.8" CMOS network camera
- Analog version alternatively available
- Applicable up to 2,400 °C



## FRS-LI1 SERIES - TECHNICAL DATA

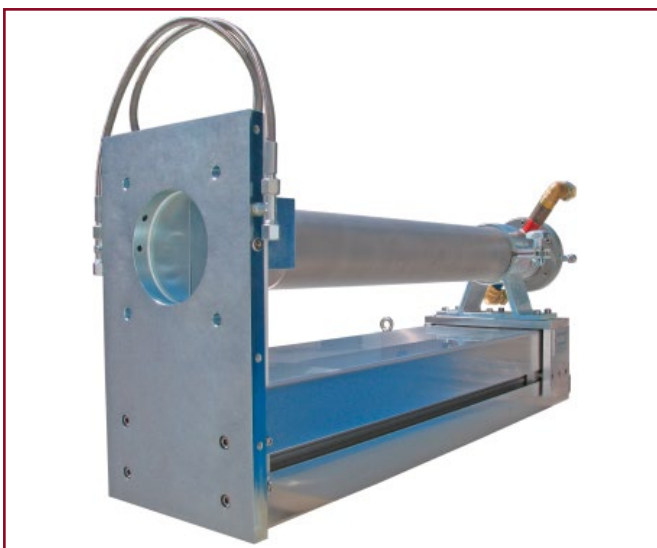
GENERAL	Axial or radial furnace probe with optical fiber lightning system
CAMERA	1/2.8" CMOS Full HD network camera (alternatively analog camera possible)
	Min. illumination: color: 0.25 lux F1.4 / b/w: 0.05 lux F1.4
	Shutter speed: 1/143,000 to 2 sec.
	Frame rate: H.264 up to 25/30 fps / MJPEG 25/30 fps
LENS	Megapixel furnace probe lens / manual iris control / incl. IR-filter
JUNCTION BOX	Camera multi-functional junction box incl. external LED cold light source 6,500 °K Housing: stainless steel
COOLING WATER	Inlet temp.: 35-40 °C / outlet temp.: max. 45 °C Inlet pressure: 2.0 bar / outlet pressure: 0 bar (open cycle) Water pressure for pressure reducer: 2.5 to 8.0 bar
COMPRESSED AIR	Inlet pressure upstream: min. 2.0 bar to max. 10.0 bar Operating pressure: min. 1.0 bar to max. 2.0 bar

## FRS-LI1 SERIES - OPTIONAL ACCESSORY



### ASZ-800 - LINEAR RETRACTING DEVICE

- Pneumatically controlled linear actuator
- Variable probe installations depths, position-independent installation
- Forced actuated shutter
- Corrosion resistant
- Different stroke-lengths
- Optional 360° rotatable probe



**PIEPER**

[www.pieper-video.de](http://www.pieper-video.de)  
[info@pieper-video.de](mailto:info@pieper-video.de)

#### SCHWERTE

PIEPER GmbH  
Binnerheide 33  
58239 Schwerte  
T: +49 2304 4701 0  
F: +49 2304 4701 77

#### DÜSSELDORF

PIEPER GmbH  
Gumbertstr. 111  
40229 Düsseldorf  
T: +49 211 2150 33  
F: +49 211 2150 36

#### BERLIN

PIEPER GmbH  
Großbeerenstr. 169  
12277 Berlin  
T: +49 30 722 52 99  
F: +49 30 722 44 87

#### COTTBUS

PIEPER GmbH  
Calauer Str. 70  
03048 Cottbus  
T: +49 355 430 903 40  
F: +49 355 430 903 41