



FK-CF-3712 / -3713

Analoge Feuerraum-Kamera (Farbe)

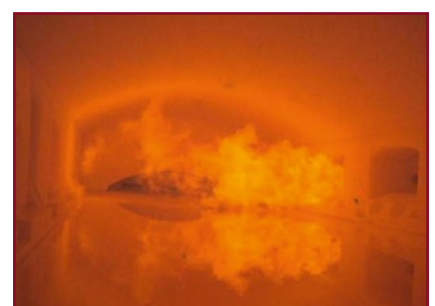
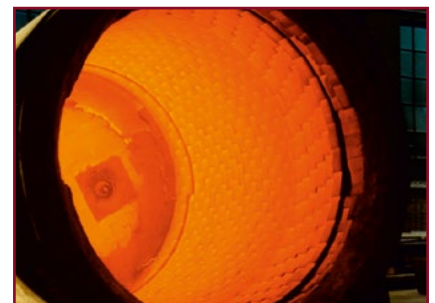
FUNCTIONALITY

For process monitoring in high-temperature areas, special CCTV cameras are used for those rough environments. Different areas of application in the steel, glass and cement industry require robust, vibration and shock resistant cameras, which can easily withstand continuous industrial operations - on the other hand they have to be sensitive enough to record highly detailed color video images.

For the FK-CF-3712 / -3713 series, various furnace color cameras are available, which are characterized by a number of special technical features and a special design. The cameras work with digital signal processing DSP, have different possibilities of synchronization and are installed in protective housings (SIG series.) The housings are designed in 1-cable technology and have only one single 10-pin MIL standard connector at the rear.

MAIN FEATURES

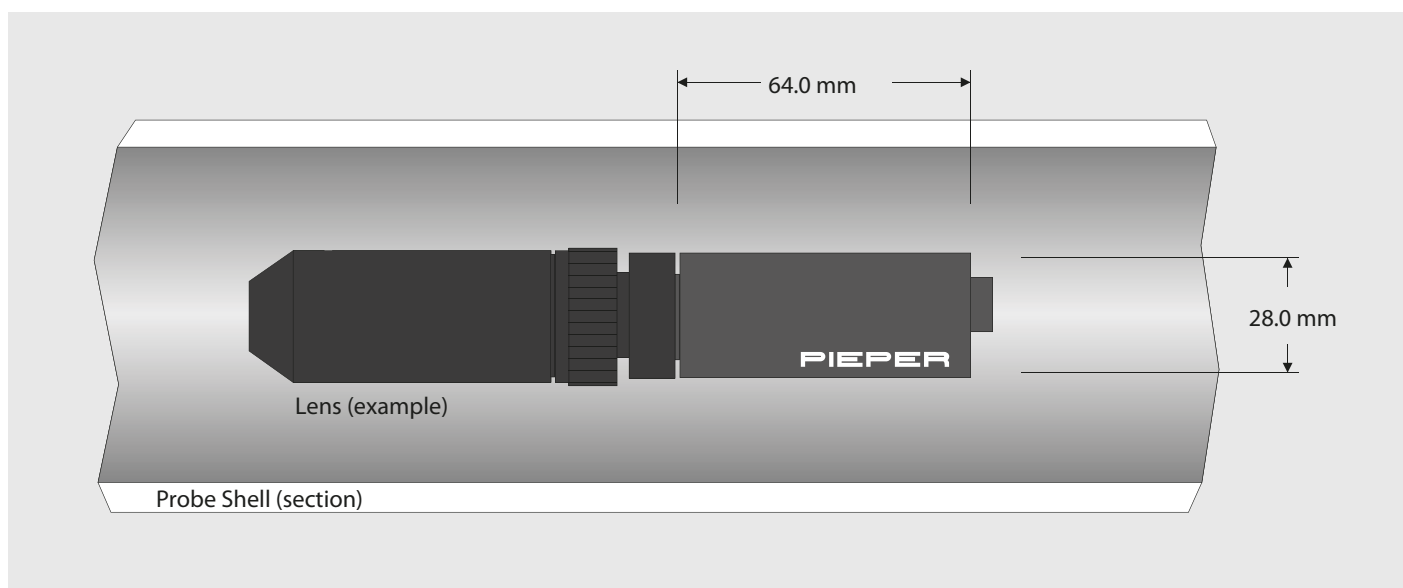
- GUI (Graphic User Interface)
- Integrated test signal generator
- Digital signal processing DSP
- Shutter control DC/AI
- RS232C interface
- Interface data board for RS232 to RS422 conversion available



FK-CF-3712 / 3713 - TECHNICAL DATA

	FK-CF-3712-2-XX	FK-CF-3713-2-XX
Sensor	1/2" interline transfer CCD	1/3" interline transfer CCD
Display	PAL: 752 x 582 pixel (H x V) NTSC: 768 x 494 pixel (H x V)	
TV lines	PAL: 625 lines NTSC: 460 lines	
Resolution	> 480 Linien (H)	
Min. Illumination	0.01 lx (color); 0.001 lx (b/w)	
S/N ratio	> 48 dB	
Synchronization	Internal, quartz	
Backlight compensation	Freely programmable	
AGC	0 - 32 dB	
Gamma correction	10 steps selectable	
Automatic white balance	Automatic/manual: 2.500 to 10.500 K	
Electronic shutter	PAL: 1/50 - 1/100.000 sec., variable NTSC: 1/60 - 1/100.000 sec., variable	
Video output	FBAS 1,0 Vss 75 Ohm	
Menu settings	Camera parameters, pan, tilt, zoom	
Operating voltage	12 V DC	
Power consumption	Approx. 3.0 W	
Mount	CS mount	
Lens control	Video, DC	
Operating temperature (w/o protective housing)	-20°C to +70°C	
Dimensions (w/o protective housing)	Approx. 28 x 28 x 64 mm	
Weight (w/o protective housing)	Approx. 70 g	

FK-CF-3712 / 3713 - DIMENSIONS



PIEPER

www.pieper-video.de
info@pieper-video.de

SCHWERTE

PIEPER GmbH
Binnerheide 33
58239 Schwerte
T: +49 2304 4701 0
F: +49 2304 4701 77

DÜSSELDORF

PIEPER GmbH
Gumbertstr. 111
40229 Düsseldorf
T: +49 211 2150 33
F: +49 211 2150 36

BERLIN

PIEPER GmbH
Großbeerenstr. 169
12277 Berlin
T: +49 30 722 52 99
F: +49 30 722 44 87

COTTBUS

PIEPER GmbH
Calauer Str. 70
03048 Cottbus
T: +49 355 430 903 40
F: +49 355 430 903 41